



# Flat face couplings made to the ISO 16028 Standard

## HQ Series



### INTRODUCTION

The HQ Series flat face couplings are Holmbury's flagship products, known globally for their leak free performance across multiple applications. The preferred choice for many global OEMs.



04-40

1/8"-2"

BSPP  
NPTF  
METRIC  
SAE/JIC

BAR  
450  
PSI  
6525

ISO  
16028

CARBON  
STEEL  
ZINC  
NICKEL

\*Size 1/8" is not covered by the ISO 16028 Standard. Please check with office for compatibility.

### CONSTRUCTION

- Carbon steel with zinc nickel plating (1200 hours with no red rust in salt spray tests)
- Fitted with NBR seals (FKM seals available)
- Also available in AISI 316 stainless steel (See HSS Series)

### FEATURES

- Safety locking sleeve fitted as standard to prevent accidental disconnection
- Flat faces are easily wiped clean
- Minimal inclusion of air and contaminants during connection
- Flat face design prevents fluid loss during disconnection
- Bidirectional flow

### ACCESSORIES

- Dust caps are available for the HQ Series

### SPECIFICATIONS

- Operating temperatures (With NBR seals): -40°C (-40°F) to 106°C (223°F), (With FKM seals): -20°C (-4°F) to 200°C (392°F)
- Couplings have been tested to the ISO 18869 Standard

### APPLICATIONS

- High pressure pulse applications
- Leak free environments
- Construction plant
- Mobile equipment
- General industrial
- Agricultural
- Skid steer loaders

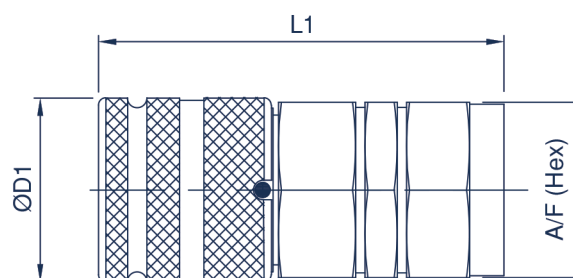
### HQ PERFORMANCE CHARACTERISTICS

Body Size	HQ04	HQ06	HQ10	HQ12	HQ16	HQ19	HQ25	HQ32	HQ40
	Pressure in bar - Flow in LPM								
	Pressure in PSI - Flow in GPM								
Maximum working pressure (Coupled)	450 6525	400 5800	375 5438	350 5075	350 5075	350 5075	315 4568	250 3625	250 3625
Burst pressure (Coupled)	1750 25380	1600 23200	1550 22475	1400 20300	1500 21750	1450 21025	1000 14500	1100 15950	1000 14500
Burst pressure (Male)	1750 25380	1850 26825	1200 17400	1300 18850	1200 17400	1100 15950	1000 14500	1200 17400	1000 14500
Burst pressure (Female)	1750 25380	1220 17690	1050 15225	1000 14500	1050 15225	1050 15225	1000 14500	1200 17400	1000 14500
Rated flow	3 0.8	12 3.2	23 6.1	45 12	74 19.5	100 26.4	189 50	250 66	379 100

### CAPS ACCESSORIES

FEMALE CAPS	MALE CAPS
HQ06-F-CAP	HQ06-M-CAP
HQ10-F-CAP	HQ10-M-CAP
HQ12-F-CAP	HQ12-M-CAP
HQ16-F-CAP	HQ16-M-CAP
HQ19-F-CAP	HQ19-M-CAP
HQ25-F-CAP	HQ25-M-CAP

Standard colour is red pvc, other colours available upon request



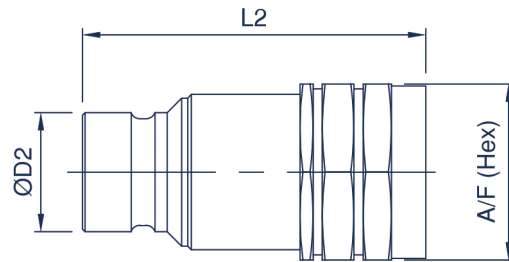
## HQ FEMALE COUPLING

Body Size	Part Number	Thread Size	D1		L1		A/F	
			mm	inch	mm	inch	mm	inch
04 (1/8)	HQ04-F-02G	1/8 BSPP	20.4	0.80	40.2	1.58	17.0	0.67
	HQ04-F-02N	1/8 NPTF	20.4	0.80	40.2	1.58	17.0	0.67
	HQ04-F-04S	7/16-20 UNF	20.4	0.80	40.2	1.58	17.0	0.67
06 (1/4)	HQ06-F-04G	1/4 BSPP	28.0	1.10	54.0	2.13	27.0	1.06
	HQ06-F-04N	1/4 NPTF	28.0	1.10	54.0	2.13	27.0	1.06
	HQ06-F-06S	9/16-18 UNF	28.0	1.10	54.0	2.13	27.0	1.06
10 (3/8)	HQ10-F-06G	3/8 BSPP	32.0	1.26	69.0	2.72	30.0	1.18
	HQ10-F-06N	3/8 NPTF	32.0	1.26	69.0	2.72	30.0	1.18
	HQ10-F-06S	9/16-18 UNF	32.0	1.26	69.0	2.72	30.0	1.18
	HQ10-F-08G	1/2 BSPP	32.0	1.26	74.0	2.91	30.0	1.18
	HQ10-F-08N	1/2 NPTF	32.0	1.26	74.0	2.91	30.0	1.18
12 (1/2)	HQ10-F-08S	3/4-16 UNF	32.0	1.26	74.0	2.91	30.0	1.18
	HQ12-F-08G	1/2 BSPP	38.0	1.50	83.8	3.30	36.0	1.42
	HQ12-F-08N	1/2 NPTF	38.0	1.50	83.8	3.30	36.0	1.42
	HQ12-F-08S	3/4-16 UNF	38.0	1.50	83.8	3.30	36.0	1.42
	HQ12-F-10S	7/8-14 UNF	38.0	1.50	83.8	3.30	36.0	1.42
	HQ12-F-12G	3/4 BSPP	38.0	1.50	83.8	3.30	36.0	1.42
16 (5/8)	HQ12-F-12N	3/4 NPTF	38.0	1.50	83.8	3.30	36.0	1.42
	HQ12-F-12S	1 1/16-12 UN	38.0	1.50	83.8	3.30	36.0	1.42
	HQ16-F-12G	3/4 BSPP	42.0	1.65	83.8	3.30	41.0	1.61
	HQ16-F-12N	3/4 NPTF	42.0	1.65	83.8	3.30	41.0	1.61
19 (3/4)	HQ16-F-12S	1 1/16-12 UN	42.0	1.65	83.8	3.30	41.0	1.61
	HQ19-F-12G	3/4 BSPP	48.0	1.89	99.0	3.90	46.0	1.81
	HQ19-F-12N	3/4 NPTF	48.0	1.89	99.0	3.90	46.0	1.81
	HQ19-F-12S	1 1/16-12 UN	48.0	1.89	99.0	3.90	46.0	1.81
	HQ19-F-16G	1 BSPP	48.0	1.89	99.0	3.90	46.0	1.81
25 (1)	HQ19-F-16N	1 NPTF	48.0	1.89	99.0	3.90	46.0	1.81
	HQ19-F-16S	1 5/16-12 UN	48.0	1.89	99.0	3.90	46.0	1.81
	HQ25-F-16G	1 BSPP	55.0	2.17	108.5	4.27	55.0	2.17
	HQ25-F-16N	1 NPTF	55.0	2.17	108.5	4.27	55.0	2.17
	HQ25-F-16S	1 5/16-12 UN	55.0	2.17	108.5	4.27	55.0	2.17
	HQ25-F-20G	1 1/4 BSPP	55.0	2.17	111.5	4.39	55.0	2.17
32 (1 1/4)	HQ25-F-20N	1 1/4 NPTF	55.0	2.17	111.5	4.39	55.0	2.17
	HQ25-F-20S	1 5/8-12 UN	55.0	2.17	111.5	4.39	55.0	2.17
	HQ32-F-24G	1 1/2 BSPP	80.0	3.15	132.2	5.20	70.0	2.76
40 (1 1/2)	HQ32-F-24N	1 1/2 NPTF	80.0	3.15	132.2	5.20	70.0	2.76
	HQ32-F-24S	1 7/8-12 UN	80.0	3.15	132.2	5.20	70.0	2.76
	HQ40-F-32G	2 BSPP	102.8	4.05	147.3	5.80	80.0	3.15
40 (1 1/2)	HQ40-F-32N	2 NPTF	102.8	4.05	147.3	5.80	80.0	3.15
	HQ40-F-32S	2 1/2-12 UN	102.8	4.05	147.3	5.80	80.0	3.15

For all other configurations or thread types please contact the sales office.



## Flat face couplings made to the ISO 16028 Standard



### HQ MALE COUPLING

Body Size	Part Number	Thread Size	D2		L2		A/F	
			mm	inch	mm	inch	mm	inch
04 (1/8)	HQ04-M-02G	1/8 BSPP	11.6	0.46	36.5	1.44	17.0	0.67
	HQ04-M-02N	1/8 NPTF	11.6	0.46	36.5	1.44	17.0	0.67
	HQ04-M-04S	7/16-20 UNF	11.6	0.46	36.5	1.44	17.0	0.67
06 (1/4)	HQ06-M-04G	1/4 BSPP	16.1	0.64	53.5	2.11	27.0	1.06
	HQ06-M-04N	1/4 NPTF	16.1	0.64	53.5	2.11	27.0	1.06
	HQ06-M-06S	9/16-18 UNF	16.1	0.64	53.5	2.11	27.0	1.06
10 (3/8)	HQ10-M-06G	3/8 BSPP	19.7	0.78	60.0	2.36	27.0	1.06
	HQ10-M-06N	3/8 NPTF	19.7	0.78	60.0	2.36	27.0	1.06
	HQ10-M-06S	9/16-18 UNF	19.7	0.78	60.0	2.36	27.0	1.06
	HQ10-M-08G	1/2 BSPP	19.7	0.78	63.0	2.48	27.0	1.06
	HQ10-M-08N	1/2 NPTF	19.7	0.78	63.0	2.48	27.0	1.06
	HQ10-M-08S	3/4-16 UNF	19.7	0.78	63.0	2.48	27.0	1.06
12 (1/2)	HQ12-M-08G	1/2 BSPP	24.5	0.97	71.0	2.80	36.0	1.42
	HQ12-M-08N	1/2 NPTF	24.5	0.97	71.0	2.80	36.0	1.42
	HQ12-M-08S	3/4-16 UNF	24.5	0.97	71.0	2.80	36.0	1.42
	HQ12-M-10S	7/8-14 UNF	24.5	0.97	71.0	2.80	36.0	1.42
	HQ12-M-12G	3/4 BSPP	24.5	0.97	71.0	2.80	36.0	1.42
	HQ12-M-12N	3/4 NPTF	24.5	0.97	71.0	2.80	36.0	1.42
16 (5/8)	HQ12-M-12S	1 1/16-12 UN	24.5	0.97	71.0	2.80	36.0	1.42
	HQ16-M-12G	3/4 BSPP	27.0	1.06	73.0	2.87	36.0	1.42
	HQ16-M-12N	3/4 NPTF	27.0	1.06	73.0	2.87	36.0	1.42
19 (3/4)	HQ16-M-12S	1 1/16-12 UN	27.0	1.06	73.0	2.87	36.0	1.42
	HQ19-M-12G	3/4 BSPP	29.9	1.18	84.0	3.31	46.0	1.81
	HQ19-M-12N	3/4 NPTF	29.9	1.18	84.0	3.31	46.0	1.81
	HQ19-M-12S	1 1/16-12 UN	29.9	1.18	84.0	3.31	46.0	1.81
	HQ19-M-16G	1 BSPP	29.9	1.18	84.0	3.31	46.0	1.81
	HQ19-M-16N	1 NPTF	29.9	1.18	84.0	3.31	46.0	1.81
25 (1)	HQ19-M-16S	1 5/16-12 UN	29.9	1.18	84.0	3.31	46.0	1.81
	HQ25-M-16G	1 BSPP	36.0	1.42	97.0	3.82	55.0	2.17
	HQ25-M-16N	1 NPTF	36.0	1.42	97.0	3.82	55.0	2.17
	HQ25-M-16S	1 5/16-12 UN	36.0	1.42	97.0	3.82	55.0	2.17
	HQ25-M-20G	1 1/4 BSPP	36.0	1.42	90.4	3.56	55.0	2.17
	HQ25-M-20N	1 1/4 NPTF	36.0	1.42	90.4	3.56	55.0	2.17
32 (1 1/4)	HQ25-M-20S	1 5/8-12 UN	36.0	1.42	90.4	3.56	55.0	2.17
	HQ32-M-24G	1 1/2 BSPP	57.0	2.24	119.7	4.71	70.0	2.76
	HQ32-M-24N	1 1/2 NPTF	57.0	2.24	119.7	4.71	70.0	2.76
40 (1 1/2)	HQ32-M-24S	1 7/8-12 UN	57.0	2.24	119.7	4.71	70.0	2.76
	HQ40-M-32G	2 BSPP	72.9	2.87	173.2	6.82	80.0	3.15
	HQ40-M-32S	2 NPTF	72.9	2.87	173.2	6.82	80.0	3.15
	HQ40-M-32N	2 1/2-12 UN	72.9	2.87	173.2	6.82	80.0	3.15

For all other configurations or thread types please contact the sales office.